

DVR865HD

Digital Video Camcorder

Owner's Manual



Vivitar

© 2009 Sakar International, Inc. All rights reserved.

Windows and the Windows logo are registered trademarks of Microsoft Corporation.

All other trademarks are the property of their respective companies.

Table of Contents

Introduction	2
Key Features	2
What your digital video camera includes	3
Computer System Requirements for Windows XP	4
Computer System Requirement for Windows Vista.....	4
Computer System Requirements for Macintosh	5
A Quick Look at your Digital Video Camera	6
Preparing Your Camera for Use	7
Inserting an SD Memory Card	8
Software Installation: Snap 'n Share Pro and Video Express.....	10
Software Installation	10
DVR Function Control.....	17
Transferring Images to your PC using the software	43
Manually transfer media to your Digital Camera.....	51
Everything you need to get the most of your media and MORE.....	52
Video Express application	56
Technical Support.....	64
Sakar Warranty Card	64
Technical Specifications	66
Trouble Shooting	68

Introduction

Thank you for purchasing the DVR865HD Digital Video Camcorder. With your camera you can shoot video clips, take individual photos and record audio files. In addition, a SD compatible memory card of up to 16GB needs to be inserted in order to expand the memory of your DVR camera.

Key Features

- 5 modes – DSC Camera, Video, Playback, Set Up and Audio.
- Digital Video resolutions – 1280x720 Pixels (HD), 640x480 (VGA), 320x240 (QVGA).
- 8.1 mega-pixels camera with choice of 6 digital camera resolutions- 3264*2448pixels (8.1M),3072*2304 pixels (7M),2592*1944 pixels (5M),2048*1536 pixels (3M),1600*1200 pixels (2M),1280*960 pixels (1.3M)
- 2.4" TFT LCD
- 8 X Digital Zoom
- Supports external SD memory card up to 16GB
- Built-in Microphone

- Takes digital photos, videos and record audio files
- Delete, protect and print photos directly from your camera
- Snap 'n Share Pro software application can be used to download the photos and videos from your camera with the touch of a button
- Edit, add text, clipart and more on your digital photos
- Produce colorful movies to upload, copy to CD/DVD and much more with Video Express software.
- Plugging in your camera to the PC automatically opens up YouTube on your internet browser

What your digital video camera includes

- Digital Video Camcorder
- USB cable
- TV cable
- Li-ion Rechargeable Battery
- Snap n Share Pro Software installation CD
- Quick Start Guide
- Wrist strap

- AC adapter
- Hop pocket

Computer System Requirements for Windows XP

To be able to download photos and videos to your PC you will need the following minimum configuration:

- Pentium 4 Processor (or above), 2.6 GHZ., with Windows XP Service Pack 2
- 512 MB RAM, 200MB free disk space.
- Available USB Interface
- CD-ROM Drive
- Recommended screen resolution 1024 X 768 pixels or higher.
- 16-bit color or higher display adaptor.
- Windows Media Player 9 (or above) as default media player

Computer System Requirement for Windows Vista

To be able to download photos to your PC you will need the following minimum configuration:

- Windows Vista

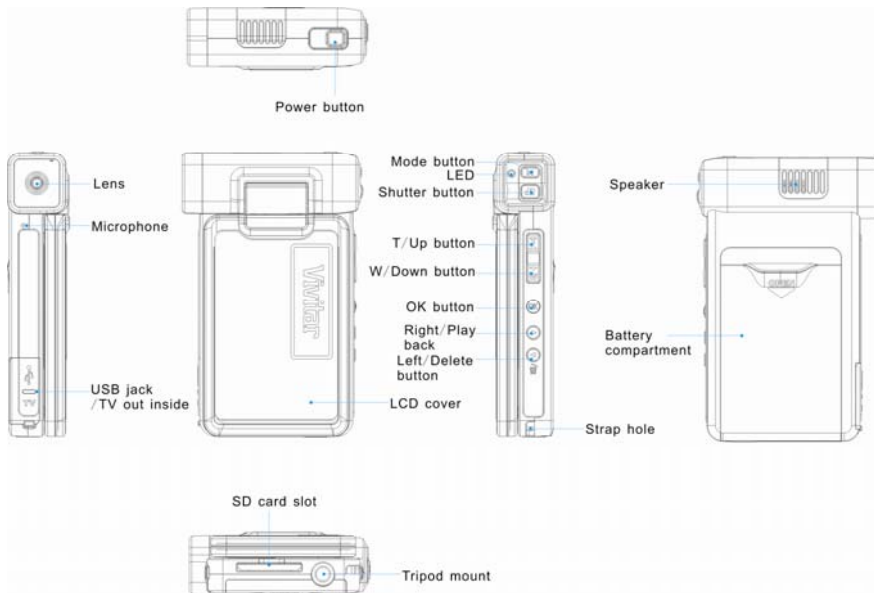
- 800MHz processor and 512 MB of system memory
- 20GB hard driver with at least 15GB of available space
- Support for Super VGA graphics
- Available USB Interface
- CD-ROM drive

Computer System Requirements for Macintosh

- Power Macintosh G3 500 MHz or higher
- Mac OS X version 10.2.6 or later
- 128 MB or more available system RAM (256 MB recommended)
- 150 MB free disk space
- 800 x 600 or higher-resolution monitor displaying millions of colors

Note: The Snap n Share Pro software as well as the Video Express software are not compatible on Macintosh computers. You may however use the camera as a regular MSDC USB removable device.

A Quick Look at your Digital Video Camera

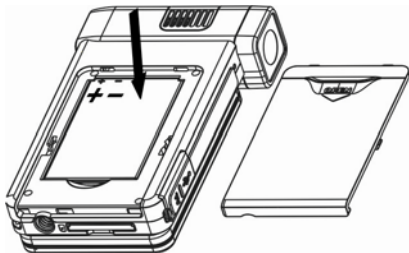


Preparing Your Camera for Use

Battery Installation

Your DVR camcorder requires a Li-ion rechargeable battery (included in packaging).

1. Open the battery compartment on the side of the camera.
2. Insert the battery in accordance with the polarity indicated.
3. Return and close the battery cover.



4. To charge your battery the camera should be off. Plug in the camera and connect to the USB port of the PC. **Allow the rechargeable battery to charge for at least 6 hours before using the camera for the first time.**

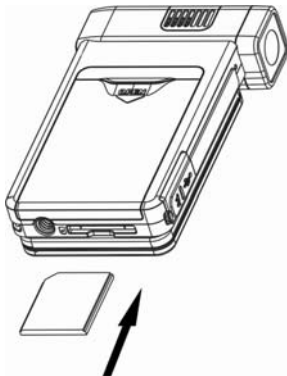
Note:

- On removing the battery from the camera all photos and videos clips in limited built-in memory will be lost.
- Limited internal memory is provided in order to take test photos and videos.
- A SD Memory card is required for normal use. All the media in the built-in memory will be lost if no SD Memory Card has been inserted in the DVR when you remove your battery or when the camera is turned off.
- We strongly recommend downloading your photos and videos regularly to your computer.
- Remove the battery from the DVR camera when not in use for an extended period.


Inserting an SD Memory Card

A SD compatible memory card of up to 16GB (not included) should be inserted into your DVR camera. SD Memory cards expand the amount of memory thus allowing an increase in the number of movies, photos and audio clips that can be captured before transferring them to a computer.

Media sitting on the memory card is not lost when your camera's power runs low or on removing the battery.



1. Locate the SD card slot on the bottom of the camera.
2. Insert a compatible SD memory card correctly in the direction shown.
3. Press the memory card until you hear a “Click” sound. The memory card when properly inserted will sit flush with the camera.

Note: After you insert an SD memory card, the  icon will appear on the LCD, indicating that your SD memory card has been installed successfully, and the media you capture will now be stored on the card and not in the limited internal memory.

- This product supports SD cards of up to 16GB.
- Formatting will delete all data on the SD Memory Card including protected data.
- Do not remove the SD memory Card during formatting as this may damage the card and render it unusable.
- Be sure to format the card with the camera.

Software Installation: Snap ‘n Share Pro and Video Express

Follow the step by step instructions that appear on your computer screen during the installation process.

Software Installation

1. Insert the CD into your CD-Rom drive.
2. Wait for the computer to automatically recognize and open the first stage of the software installation.

3. The Welcome to the Snap 'n Share Pro Installation Wizard Setup screen will appear.

Note: On Vista operating systems you may see an AutoPlay window appear. Select the **SMSetup.exe** option to begin the software setup.



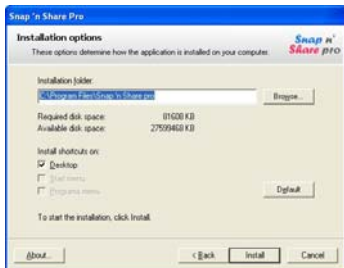
4. Click the “**Begin**” button to begin the software setup and installation process.



5. The Setup wizard will start to install the Snap 'n' Share Pro application on your computer. Click **“Next”** to continue.



6. Please review the license terms and click the **"I Agree"** button to continue.



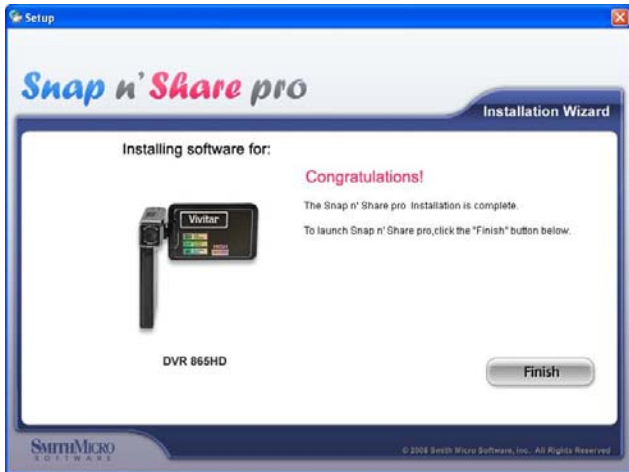
7. In the Installation options you can choose where to install this application on your computer. However, it is recommended to let the Snap 'n Share Pro installer create the folder to where the program will be installed. Click **“Install”** and follow the instructions.



8. Click **“Finish”** to let the Snap 'n Share Pro installer finish the installation program.



9. The Setup will now begin to silently install the Video Express software. This might take a few second to install depending on the operating system you are running.



Congratulations!! You have successfully installed the Snap 'n Share Pro and Video Express software on your PC.
Click the **"Finish"** button to open the Snap 'n Share Pro application.

DVR Function Control

Power on

Press the Power button on the top of the camera to turn on your DVR.
The LCD monitor will light up indicating that your DVR is ready for use.

Power off

Press the Power button to turn your DVR camera off. The DVR camera will switch off.
If the DVR camera is not in use or in an operational mode for 120 seconds (default) it will switch off automatically.

When there is insufficient battery power, a “Low Battery” message will appear on the LCD screen. The camera will automatically power off a few moments later.


Capturing Videos


In order to capture videos (with audio) using your camcorder you will need to insert a compatible SD card of up to 16 GB for normal operation.

1. Press the Mode button to open the menu mode.
2. Press the Up/Down button to select VIDEO.

3. Press the OK button to confirm and enter the Video mode.

Note: This mode is defaulted by your DVR camera.

The video  icon will now appear on the top left corner of the LCD.

1. Press the Shutter button found just below the Mode button to start shooting.
2. A  icon will appear and begin to flash. The elapsed time of the video will appear on the top right of the LCD.
3. Press the Shutter button again to stop the recording.
4. The recorded file will be saved in AVI format (with audio).

Note:

1. You can exchange between Video and Playback mode quickly by pressing Right button for playback video files.
2. During shooting the videos you can adjust the zoom to focus in on your subject.
3. You can view the AVI files in playback mode.
4. Once they are downloaded to the PC view them using QuickTime and Windows Media Player.
5. As the internal memory of the camera is limited it should be used for test files only.

6. Please insert a SD memory card of up to 16 GB for normal use.
7. When the internal memory is full, a “Disk Full” message will appear on the LCD screen when you attempt to shoot further videos.

In Video mode there are three video resolutions for you to choose from before capturing your video. The higher the resolution selected the better the quality of the video, however higher quality videos use up more memory.


To enter the Setup options for the Video mode press the OK button.

The different modes are explained in detail below.

Scene

Your camcorder comes supplied with different scenes for you to take images in almost every type of environment - Auto, Scenery, Night Scenery, Portrait, Night Portrait, Beach, Sports and Party.

Select the scenery for the present light and environmental conditions.

1. Press the OK button.
2. Press the Right/Left button to select the Scene icon  that appears on the bottom left of the LCD.

3. Press the Up/Down button to select the desired scenery option from the menu that appears.
4. Press the OK button to confirm, save your choice and exit.

Note:

After selecting your scenery, the corresponding icon will appear on the left hand side of the LCD.

Resolution

You can select different Video resolutions - High Definition (HD) 1280x720 pixels / VGA 640x480 pixels / QVGA 320x240 pixels

1. Press the OK button.
2. Press the Right/Left button to select the Resolution icon **MP** that appears on the bottom left of the LCD.
3. Press the Up/Down button to select the desired resolution option from the menu that appears.
4. Press the OK button to confirm, save your choice and exit.

Note:

After selecting your resolution, the corresponding icon will appear on the left hand side of the LCD.

Exposure

This setting allows you to control the brightness of your images.

1. Press the OK button.
2. Press the Right/Left button to select the Exposure option.
3. Press the Up/Down button to select an exposure value (from +2 to -2) from the menu that appears.
4. Press the OK button to confirm, save your choice and exit.

Note:

The corresponding exposure number will appear on the left side of the LCD screen.

White Balance

This setting is used to adjust the color of your videos as per your light source.

1. Press the OK button.
2. Press the Right/Left button to select the White Balance option **WB**.
3. Press the Up/Down button to choose the best option from the menu that appears:
Auto/Daylight/Cloudy/Fluorescent/Incandescent.
4. Press the OK button to confirm, save your choice and exit.

Note:

The corresponding White Balance icon will appear on the left side of the LCD screen.


Delete last file

In video mode, you can delete the last video by pressing the Left/Delete button.

1. A Delete message will appear on the LCD.
2. Use the Right/Left button to select “Yes” or “No”.
3. Press the OK button to confirm your choice.
4. If you selected “Yes”, the last video file will be deleted from the memory.

Taking photos in DSC mode

1. After you power on your camcorder, press the Mode button.
2. Using the Up/Down buttons select DSC from the menu that appears.
3. Press the OK button.

The camera icon  now appears on the top left corner of the LCD screen.

Important: Insert a compatible SD card of up to 16GB for normal camera use as the camera’s internal memory is limited to a few photos per each resolution.

Use the image that appears in the LCD to compose your shot.

1. Hold the camera steady and press the Shutter button below the Mode button.
2. The camera will beep and the picture taken is now saved to the memory.
3. The number of photos that can be taken for each resolution and per the memory

- card inserted appears on the top right of the LCD screen.
4. After the shot is taken the number is reduced by one.
 5. When the camcorder's internal memory is full, "Disk Full" will appear on the LCD screen when you attempt to press the Shutter button to take a photo. Download these limited test photos to your PC or delete them in order to take more photos. Alternatively, you can insert an SD memory card to expand the memory and take many more photos before having to download them to the PC.
 6. The number of photos that can be captured not only depends on the SD card's capacity but also on the resolution selected. Better quality photos are taken at higher resolutions but these will also take up more memory on the card.

Note: You can exchange the playback and DSC mode quickly by pressing the Right button for previewing photos.

The following options are available to capture the best quality photos with your camera:


Delete last file

While in camera mode, you can delete the last photo taken.

1. Press the Left/Delete button.
2. A Delete message appears on the LCD
3. Use the Right/Left button to select either "Yes" or "No".
4. Press the OK button to confirm and save your choice and revert to the camera mode.

Digital Zoom function

You can magnify your subject up to 8 times using the digital zoom.


1. Press the T/Up button to zoom in to the object.
2. Press the W/Down button to zoom back out.
3. The digital zoom icon  will appear on your LCD screen.

Note: You can use this feature both in DSC and Video mode.

Scene

Your camcorder comes supplied with different scenes for you to take photos in almost every type of environment - Auto, Scenery, Night Scenery, Portrait, Night Portrait, Beach, Sports and Party.

Select the scenery for the present light and environmental conditions.

1. Press the OK button.
2. Press the Right/Left button to select the Scene icon  that appears on the bottom left of the LCD.
3. Press the Up/Down button to select the desired scenery option from the menu that appears.
4. Press the OK button to confirm, save your choice and exit.

Note:

After selecting your scenery, the corresponding icon will appear on the left hand side of the LCD.

Resolution

The image size and quality settings determine the number of photos that can be saved and the amount of memory required for each photo. The higher the quality of the photo the more memory it will take. The image size and quality will also affect the maximum size you can print your photo effectively.


To set the resolution:

1. Press the OK button.
2. Press the Right/Left button to select the icon **MP** option on the bottom left of the LCD.
3. Press the Up/Down button to select the resolution size you choose – 8.1MP (3264x2448), 7MP (3072x2304), 5MP (2592x1944), 3MP (2048x1536), 2MP (1600x1200) or 1.3MP (1280x960).
4. Press the OK button to confirm, save your choice and exit.

Note: The resolution icon appears beneath the camera icon on the LCD screen.

Image Quality


The quality of your photos also affects the number of shots you can take. The Super setting means you can take fewer photos, but they will be of better quality.

1. Press the OK button.
2. Press the Right/Left button to select the Image Quality option .
3. Press the Up/Down button to select the quality you desire – Super/Fine/Normal.
4. Press the OK button to confirm, save your choice and exit.

Note: The corresponding Quality icon (3 stars, 2 stars or 1 star) will appear at the top left of the LCD screen.

Exposure

This setting allows you to control the brightness of your images.

1. Press the OK button.
2. Press the Right/Left button to select the Exposure option .
3. Press the Up/Down button to select an exposure value (from +2 to -2) from the menu that appears.
4. Press the OK button to confirm, save your choice and exit.

Note:

The corresponding exposure number will appear on the left side of the LCD screen.

ISO


This is a special function that allows you to compensate the light conditions when the light source is not good and also where you are not using the flash or tripod. When you want to use ISO sensitization, please choose the low ISO value to prevent blotches appearing on your photo.

1. Press the OK button.
2. Press the Right/Left button to select the ISO option **ISO**.
3. Press the Up/Down button to select an ISO value from the menu that appears – 100/200/400/800/1600/3200.
4. Press the OK button to confirm, save your choice and exit.

Note: The corresponding ISO icon will appear on the left side of the LCD screen.

Sharpness

This setting allows you to adjust the sharpness of your images, making edges more or less distinct.

1. Press the OK button.
2. Press the Right/Left button to select the Sharpness option .

3. Press the Up/Down button to select a sharpness value from the menu that appears – Soft/Normal/Sharp.
4. Press the OK button to confirm, save your choice and exit.

White Balance


This setting is used to adjust the color of your photos as per your light source.

1. Press the OK button.
2. Press the Right/Left button to select the White Balance option **WB**.
3. Press the Up/Down button to choose the best option from the menu that appears: Auto/Daylight/Cloudy/Fluorescent/Incandescent.
4. Press the OK button to confirm, save your choice and exit.


Note: The corresponding White Balance icon will appear on the left side of the LCD screen.

Anti-Shake

Your Digital Camcorder has a function that prevents blurry photos as a result of trembling when taking photos. Due to this function, you are not required to use a tripod for steady photo shots.


1. Press the OK button.
2. Press the Right/Left button to select the Anti-Shake option .

3. Press the Up/Down button to select “On” from the menu that appears.
4. Press the OK button to confirm, save your choice and exit.

Note: The icon  will appear on the right side of the LCD screen.

Time Stamp


With this function, you may record the date and time on your photo.

1. Press the OK button.
2. Press the Right/Left button to select the Time Stamp option .
3. Press the Up/Down button to select “On” or “Off” from the menu.
4. Press the OK button to confirm, save your choice and exit.

Note: The corresponding Time Stamp icon will appear on the right side of the LCD screen.

Self-Timer


You can include yourself in a photo by using this feature to delay the time between your pressing the Shutter button and when the photo is actually taken.

1. Press the OK button.
2. Press the Right/Left button to select the Self Timer icon  on the bottom left of the LCD screen.
3. Press the Up/Down button to select one of the options 5S/10S/Off from the menu that appears.
4. Press the OK button to confirm, save the choice and exit.
5. The Self Timer icon selected now appears on the LCD screen.
6. Press the Shutter button to begin the timer to take the photo.
7. The timer countdown will appear in the center of the LCD accompanied by loud beeps until the photo is taken.

Multi-Snapshot

Take 3 consecutive photos automatically.

You will need an SD card inserted in order to use this feature

1. Press the OK button.
2. Press the Right/Left button to select the Multi-Snapshot option .
3. Press the Up/Down button to select "On" from the menu that appears.
4. Press the OK button to confirm, save the choice and exit.
5. Press the Shutter button.
6. The camera will take 3 consecutive photos

Note:

1. The default setting for the Multi-snapshot icon that appears at the top of the LCD is Off.
2. Please insert a SD memory card for multi-snapshot photos, otherwise the “Memory Not Enough” will show on the screen when you activate this function.

Audio Mode

A SD card needs to be inserted to use this mode.

Switch on the camera.

Press the Mode button.

Use the Up/Down button to select the AUDIO option from the menu that appears.

Press the OK button to enter the Audio mode.



The Audio **AUDIO** icon will now appear in the center of the LCD.

1. Press the Shutter button to start recording audio files.
2. The record icon **●REC** will appear and flash on the screen.
3. The elapsed time will appear on the LCD screen.

4. Press the Shutter button to stop and save as a WAV audio file on your SD memory card.

Note: You can exchange the playback and Audio mode quickly by pressing the Right button for playback audio file.


Playback mode

1. Switch on the camera.
2. Press the Mode button.
3. Use the Up/Down button to select the PLAYBACK option from the menu that appears.
4. Press the OK button to enter the Playback mode.

Operation for Audio file

You can playback Audio files recorded on your camera

1. Select an audio file by pressing Right/Left button.
2. Press Shutter button to start playing, "Playing audio" will display in the center of the screen until playing stop.


Note: When you select an Audio file, the icon  will appear on the LCD screen.

Operation for AVI file

You can playback AVI files recorded on your camera

1. Select an AVI file you want to play.
2. Press the Shutter button to start playing the file.
3. Press the Shutter button again to stop.

Note:

1. For how to protect and delete photos/videos, please refer to the **Operation of still photos**.
2. When you select an AVI file, the icon  will appear on the LCD screen.

In Playback mode you can protect, delete your photos and you can protect and delete video clips. You can also print photos directly from your camcorder using PictBridge.

Note:

If there are no files in your memory a “No File” message will appear on the LCD screen.

Thumbnail display

When the camcorder is in the Playback Mode

1. Press the Down button for the images to appear as thumbnails.
2. Select a JPG file by pressing Up/Down/Right/Left button and press the OK button for the image to appear in full screen.
3. In full screen display mode, you can press the W/T button to either zoom in or out of your photo.
4. Press OK button.
5. Press the Up/Down/Left/Right button to navigate around the magnified part of the photo.

Operation for still photos


Select a still photo (an icon  will appear on the LCD).

You now have the option to edit these photos – delete, protect or print.

Protect

You can protect your photos/videos from accidental deletion.


1. Press the OK button.

2. Press the Right/Left button to select the Protect option .
3. Press the Up/Down button to select one of Lock One/Lock All/Unlock One/Unlock All.
4. Press the OK button to confirm, save your choice and exit.

Note: At step 3, select “Unlock One/Unlock All” and press the OK button to unlock the file.

Rotate


You can rotate the jpeg file in 90/180/270 degrees.

1. Press OK button.
2. Press Right/Left button to select the Rotate option .
3. Press Up/Down button to select 90/180/270 degrees.
4. Press OK button to confirm, save your choice and exit.

Delete


You can delete unwanted photos and videos at any time to free up memory. You can delete one image, video clip or audio file at a time or delete all the unprotected photos and videos that are currently recorded on the memory card at once.

1. Press the OK button.

2. Press the Right/Left button to select the Delete option .
3. Press the Up/Down button to select either This Image/This Video/This Audio (to delete the currently selected image) or ALL (delete all unprotect images).
4. Press the OK button.
5. A Delete message will appear.
6. Press the Right/Left button to select “Yes” or “No”.
7. Press the OK button to confirm, save your choice and exit.

Print directly with PictBridge

Your camcorder allows you to print photos directly from your camera to a compatible printer with PictBridge.

1. Select a photo you want to print.
2. Press the OK button.
3. Press the Right/Left button to select the PictBridge option .
4. Press the Up/Down button and select PictBridge to print the photo.
5. Press the OK button to enter the PictBridge mode. If you are not connected to a printer the following message will appear on the LCD “Please connect to device”.
6. Connect your camcorder to a compatible printer with the provided USB cable to allow for direct printing.
7. Press the OK button to exit if you do not wish to print now.

Setup Mode

1. Switch on the camera.
2. Press the Mode button.
3. Use the Up/Down button to select the SETUP option from the menu that appears.
4. Press the OK button to enter the Setup mode.

In this mode you can set the Default setting, Format, Date format, Time format, Date/Time setting, Frequency, TV out, Auto power off and Buzzer.

Default setting

1. Press the OK button.
2. Press the Right/Left button to select the Default Setting option.
3. Press the Up/Down button to select “Yes” or “No”.
4. Press the OK button to confirm, save your choice and exit.

Format

You can delete all files in internal memory or SD memory card by using this feature.

Caution: Please make sure to download the images first before using this feature as all the images sitting in the card will be erased from the card or

internal memory. This process is irreversible.

1. Press the OK button.
2. Press the Right/Left button to select the Format option.
3. Press the Up/Down button to select "OK" or "Cancel"
4. Press the OK button.
5. A Format message will appear on the LCD.
6. Press the Right/Left button to select "Yes" or "No".
7. Press the OK button to confirm, save your choice and begin the format.

Date Format

You can set the date format that will appear on the LCD as well as in the metadata of the photo.

1. Press the OK button.
2. Press the Right/Left button and select the Date Format option.
3. Press the Up/Down button to select one of the following date formats - YY/MM/DD; MM/DD/YY; DD/MM/YY; Hide.
4. Press the OK button to confirm, save and exit to the LCD screen.

Note: the Date format will be displayed on the LCD screen in both the camera mode and video mode. If you selected Hide in step 3, it won't be displayed on the screen.

Time Format

You can set the time up in either a 12 hour or 24 hour format.

1. Press the OK button.
2. Press the Right/Left button and select the Time Format option.
3. Press the Up/Down button to select one of 12 hour/24 hour/Hide.
4. Press the OK button to confirm, save and exit.

Note: the Time format will be displayed on the LCD screen in both the camera mode and video mode. If you selected Hide in step 3, it won't be displayed on the screen.

Date/Time Setting

Set the correct date and time via this function.

1. Press the OK button.
2. Press the Right/Left button and select the Date/Time Setting option.
3. Press the Up/Down button to select Date/Time Setting.
4. Press the OK button to confirm.
5. Now you can select and highlight the Time/Date options by pressing the Right/Left button.
6. Press the Up/Down button to set the date and time.
7. Once you have set the Date and Time continue to use the Left/Right button to select the Confirm option.
8. Press the OK button to confirm, save and exit.

Note: The Date/Time format will be displayed on the LCD screen in both the camera and video mode.

Frequency

Generally speaking, 60HZ is for the U.S. and 50HZ for Europe and Japan. The default setting is 60HZ

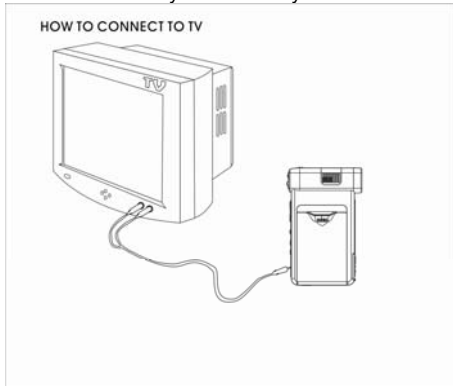
1. Press the OK button.
2. Press the Right/Left button to select the Frequency option.
3. Press the Up/Down button to select either 50HZ or 60Hz from the menu.
4. Press the OK button to confirm, save your choice and exit.

TV Out

The image of the picture you wish to capture on the LCD can also be displayed on your TV screen. Use the TV cable provided. Plug one end into the TV and the other into the TV slot found next to the USB slot on your camera.

1. Press the OK button.
2. Press the Right/Left button to select the TV Out option.
3. Press the Up/Down button to select either NTSC or PAL mode according to how your TV is set.
4. Press the OK button to confirm and save this choice.

5. Connect your DVR to your TV with the supplied TV cable.



Note: When plugged into the TV the image will not appear on the LCD screen.

Auto Power Off

In order to conserve the energy supply of your camera when it is not in use you can set the time the camcorder will automatically turn off when not active.

1. Press the OK button.
2. Press the Right/Left button to select the Auto Power off option.
3. Press the Up/Down button to select one of 1 Minute/2Minutes/Off.
4. Press the OK button to confirm and save your choice

Note: If you select “Off” from the menu your camera will never automatically turn off.

If left on for an extended period of time without turning it off yourself this will lead to the battery being drained quicker.

Buzzer

Your camcorder emits a beep or buzzer sound when you press any button. The default setting is on. To set this buzzer on or off

1. Press the OK button.
2. Press the Right/Left button to select the Buzzer option.
3. Press the Up/Down button to select either “Buzzer on” or “Buzzer off”.
4. Press the OK button to confirm and save your choice.

Transferring Images to your PC using the software

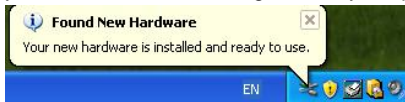
Once you have taken photos and videos with your camera you now need to download or transfer them to your computer. This allows you to save all your photos and videos for playing, editing, emailing or uploading as you desire.

Once your photos and videos are transferred to the PC you may delete them from your camera thereby freeing up the camera's memory to take more memorable shots.

Use the "Snap 'n Share Pro" program to import the videos from your camera.

1. Plug one end of the provided USB cable into the USB slot on your camera.
2. Plug the other end of the USB cable into a USB port on your computer.
3. Turn you camera on.
4. Be sure to wait until the camera is recognized by your computer.

Important: We recommend not opening the software until you see the "Your new hardware is installed and ready to use" pop-up box on the taskbar. The camera may not function properly if you do not see this message before you open your application.



1. Double-click the “Snap ‘n Share Pro” icon that appears on your desktop to launch the “Snap ‘n Share Pro” program.



2. The “**Welcome to Snap ‘n Share Pro**” Product Registration screen will open. This screen will appear each time you open the application until you register. To register your product please click the “Register Online” button and fill out the online registration form (This requires an internet connection).

Important:

1. In order to complete the installation process you are required to register. Registering your product entitles you to discounts on upgrades as well as Free Customer Support.
2. You will not be requested to enter information other than your name, email and address.

Once you have registered successfully you will be able to open and use the Snap ‘n Share Pro application.

If you choose to register at a later time click the “**Continue**” button.



3. The “Snap ‘n Share Pro” Main Menu screen appears.



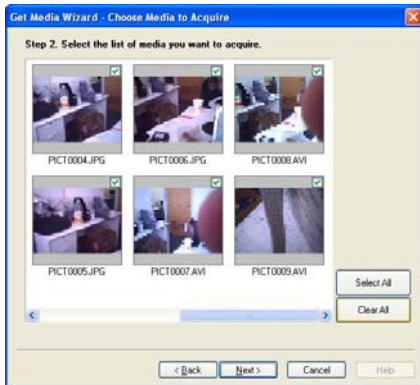
4. Click on the “**Get Media**” button to open the Get Media Wizard to begin transferring the photos and videos captured with your camera to the computer.



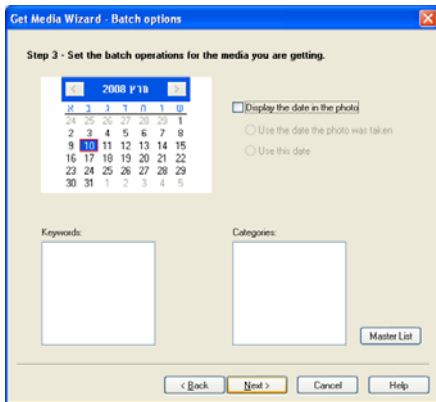
5. Step 1 - Select the device (drive) where media is stored on your camera from the Active Devices window.

Select the “**Custom**” copy method option to preview and choose the photos and videos you wish to download from the camera to your PC.

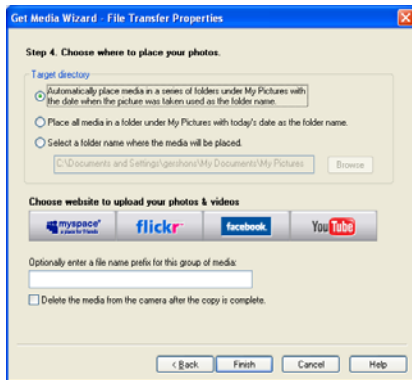
Note: Selecting the “**Express**” copy option will automatically download all media from the selected device drive to the computer without the option of selecting the media items.



6. Step 2 - Select the media items you wish to download and click the “**Next**” button.



- Step 3 - If you have photos you can choose to batch these photos once they download. Add active captions to the picture - add a date, keywords and categories. Click the **“Next”** button to continue.



8. Step 4 - Choose where to place your media once it is downloaded to the computer.
- You can also choose the website where you would like to upload your media.
 - You can also select to “Delete the media from the camera after the files have been transferred”. This will automatically delete the images on your camera and free up memory to continue capturing photos and videos.

- On clicking the “**Finish**” button your media will begin to download from the camera to the selected location.

Note: If you also selected a website, once the media is downloaded it can be viewed in the ‘Select Photos’ mode of your application and the application will jump to the ‘Upload’ mode and open the web browser of the site you chose.

For more information please refer to the Quick Start Help Guide or Show Me How Tour tutorial from within the “Snap ‘n Share Pro” application.

Manually transfer media to your Digital Camera

Your camera is a Mass Storage device

1. Connect your DVR camera to your computer using the USB cable and turn the camera on.
2. “**MSDC**” will appear on the LCD, indicating that your DVR camera is in Mass Storage Mode.
3. Double click the My Computer icon on your desktop. Click the Removable Disk that appears. Open the DCIM folder.

4. You can import media from your computer directly to this folder to use it as a removable Disk.

Note: The camera will remain on all the while it is plugged into the USB and it won't be switched off. On disconnecting the USB cable the camera will automatically switch off.

Everything you need to get the most of your media and MORE

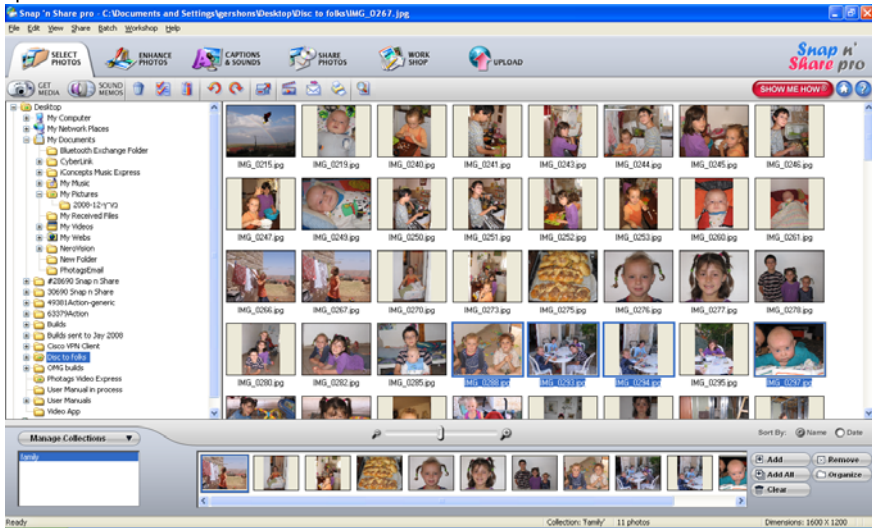
The “Snap ‘n Share Pro” software that is now installed on your computer allows you to edit existing photos that you have on your computer as well as playing, emailing and uploading the videos that you have captured with your camera.

Note: In order to play the videos Window Media Player needs to be the default player on your computer.

Click the “Snap ‘n Share Pro” icon that appears on your desktop to open the “Snap ‘n Share Pro” Software.



From the Main Menu screen that appears, select the **“Select Photos”**, **“Enhance Photos”** or **“Captions & Sounds”** buttons. You can use these features to edit your photos:



- **Manage your photos** by creating countless unique photo collections without duplicating any photos. Simply select the photos from the Thumbnail window and add them to the collection window at the bottom of the screen. Click the 'Add' button or drag the photo into the window.
- **Play your videos** – double click on the video that appears in the thumbnail screen in the Select Photos mode, or right click on the video and select the 'Play' option from the menu that appears.
- **Burn CD's** of any folders for backup and storage by right clicking on the folder in the Directory tree and choose the 'Burn to CD' option. To burn a CD of your collection, select the collection you wish to burn and then open the Manage Collections drop down menu and choose the Burn to CD option.
- **Enhance your photos** - Auto Enhance, Crop, Correct Red Eye, manually Adjust and add Special Effects.
- **Add Active Captions and Sounds** - Add Text Captions, Audio, Frames, Shapes, Keywords, Clipart... and more to your photo, that can be viewed or hidden any time.
- **Locate and Organize your photos and collections** - Search by Captions, Category, Keyword or Date directly from the operating system of your computer.

- **SlideShow** – View all the photos in your collection and add background music to your slideshow
- **Share your photos** via E-mail, Local Printing and Create HTML web pages for uploading online.
- **Workshop features** - Create Photo Albums, Frames, Calendars, two-sided Greeting Cards and Postcards to email or print on standard photo paper.
- **Upload Photos & Videos** – Choose one of the websites to upload photos and videos to your account profile in myspace, flickr, facebook or YouTube.



For more detailed information of how to use all these features please refer to the Quick Start Help Guide and/or the Show Me How Tour tutorial from within the “Snap ‘n Share Pro” application.

Video Express application

The Snap 'n Share Pro software installs a custom built Video Express application.

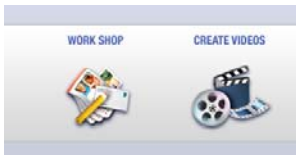
This application is a convenient and powerful tool for creating your very own professional looking movies.

Create movies on whatever theme you wish. Using all the media that you have on your computer as well as the videos that you capture with your camera you can edit, save, upload and burn your movies to CD or DVD to share with family and friends.

The movie is saved in highly compressed wmv format with excellent picture quality.

To open the Video Express:

1. Click the '**Create Videos**' icon from the Snap 'n Share Pro Main Menu to launch the "Video Express" application.



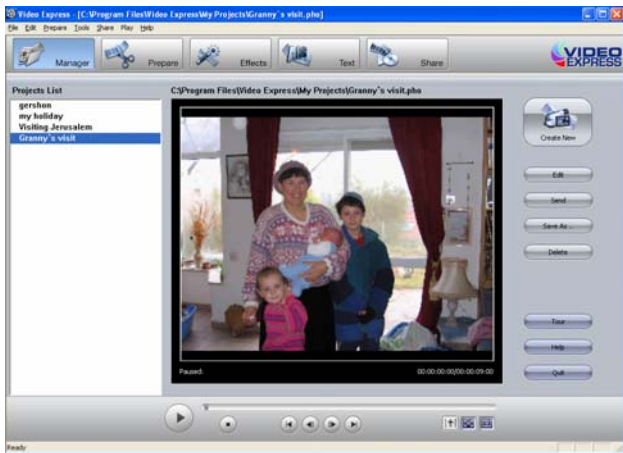
2. Alternatively, double click the “**Video Express**” icon that appears on your desktop to launch and open the “Video Express” application.



The following is a basic overview of the steps involved in making a movie.

1. **Create a Project (Manage mode)**

- A movie project is a movie that is still open for editing and revising.
- All of the source files and elements that make up your movie (videos, pictures, audio files) are arranged in a desired sequence with effects and transitions to create your very own movie.
- It is possible to create several unfinished projects at one time.
- Opening a new project in the ‘**Manage**’ mode is the first step in creating your movie.



2. **You are now ready you create your own movie by using the 'Prepare', 'Effects' and 'Text' mode features.**
3. **Find Media and Create Collections**

- The “**Prepare**” mode is the next step in creating a movie. Find the media files on your PC or camera that you would like to use in your movie project.
- A movie is made up of video and photo files that are placed sequentially with accompanying audio and special effects.
- Media on your PC can either be inserted directly from the “**Folder**” (directory tree) of your computer into your movie project or placed in a "Collection".
- “Collections” are unique compilations of video, picture and audio files that are saved on your PC that you think you might want to use in your movie project.
- Putting a file in a "**Collection**" does not add the file to the movie project or obligate you to do so. It is just a convenient container for files that you think you might want to use at a later point.
- At any stage of the movie creation you can preview the movie by using the **Video Player controls**



4. Adding Media to your Movie Project

- The next step is to actually add the media files to your movie project and begin shaping your movie.
- Click the “ **Open Media** ” button to import media from your Computer to the Video Express

- Click on the **“Get Media”** button to download videos from the camera inserted.
- Any file that you want to include in your movie is dragged or added to the **‘Timeline/Storyboard’** window.
- This ‘Timeline/Storyboard’ window displays the files in chronological order.
- Files that have been placed in the ‘Timeline/Storyboard’ can be easily moved, arranged and added to or removed.
- Use the **“Effects”** mode to add various special effects and transitions between files can also be inserted to give your movie a smooth, professional look and feel.



- You can add 'Text' either as Titles or Credits to the beginning or end of your movie or as overlay text that will appear anywhere you wish on the selected clip.



5. Creating and Saving a Completed Movie File

- When all of the arranging and editing is finished in the Timeline/Storyboard and your movie project is complete, you are ready to create a completed movie file.

- Completed movie files will be saved to your PC as a .WMV file
- The application gives you the choice of how to share your movie
- The completed movie once saved to your computer can be shared via email, uploaded to the web, copied to a CD or burn to a DVD.



Congratulations!! You have directed and created your very own movie using Video Express.

For more detailed information of how to use all these features please refer to the Quick Start Help Guide and/or the Show Me How Tour tutorial from within the “Video Express” application.

Technical Support

For all installation and software related technical support you can email your enquiries to cs@smithmicro.com.

For all hardware and warranty related issue with the camera see the next section.

Your DV camera is a delicate instrument- please handle it with care.

Sakar Warranty Card

This warranty covers for the original consumer purchaser only and is not transferable. Products that fail to function properly UNDER NORMAL USAGE, due to defects in material or workmanship. Your product will be repaired at no charge for parts or labor for a period of one year.

What Is Not Covered By Warranty:

Damages or malfunctions not resulting from defects in material or workmanship and damages or malfunctions from other than normal use, including but limited to, repair by unauthorized parties, tampering, modification or accident.

What to Do When Service Is Required:

When returning your defective product (postage pre-paid) for service, your package should include:

1. Copy of **original** bill of sale
2. A detailed written description of the problem.
3. Your return address and telephone number (Daytime)

MAIL TO ADDRESS BELOW:

Sakar International
Attention: Service Department
195 Carter Drive
Edison, NJ 08817

For technical support issues please visit our website at www.sakarhelp.com.

You can find manuals, software, drivers, and FAQ's at the website.



Can't find what you are looking for? Fill out an online ticket and one of our technical support team members will answer your questions or call our tech support department toll free at (877) 397-8200

Technical Specifications

Image Sensor	CMOS Sensor
Image Resolution	3264*2448pixels (8.1M),3072*2304 pixels (7M),2592*1944 pixels (5M),2048*1536 pixels (3M),1600*1200 pixels (2M),1280*960 pixels (1.3M)
Video Resolution	HD: 1280*720p (20fps); VGA: 640*480 (30fps); QVGA: 320*240 (30fps)
LCD Display	2.4" TFT(4:3)
LCD Swivel	270°
Internal Memory	16MB
External Memory	SD card up to 16 GB
Storage capability	Internal Memory: Still Image: 2PCS/8.1M/7.0M/5.0M/3.0M/2.0M/1.3M Video: 2s/HD, 4s/VGA, 12s/QVGA External Memory of 2GB SD Card: Video: HD/23min; VGA/33min; QVGA/100min Images: 8.1M/2155; 7.0M/2232; 5.0M/2972; 3.0M/4143;2.0M/5910;1.3M/7850.
Lens	f=7.45mm, F=3.0

Digital Zoom	8x
Self-timer	5s/10s
File Format	JPEG (Still Image) /AVI (Video) / WAV (Audio)
Shutter Speed	1/6-1/15000S
Exposure	2 ~ -2
ISO	100~3200
White Balance	Auto, Daylight, Cloudy, Fluorescent, Incandescent
Scene	Auto, Scenery, Night Scenery, Portrait, Night Portrait, Beach, Sports, Party, High Sensitivity
Anti-Shake	YES
TV out	YES
Microphone	YES
Speaker	YES
Recorder	YES
Interface	USB 2.0
System Requirements	Windows XP, VISTA or MAC OS9 in Mass Storage mode
Battery	Li-ion rechargeable
Working Temperature	0-40°C

Trouble Shooting

Relative parts	Symptom	Explanation/ Solution
Taking a Video/photo	The DV can't take video/photos after you press Shutter button.	<ul style="list-style-type: none"> .Batteries level is too low. Replace them with new ones .The DV is not in  /  mode. Please set DV to the correct mode. . Auto Power off. Restart your device. . The SDRAM or SD card is fully loaded with files. Please delete some useless files or change a memory card.
Auto power off	The camcorder goes off automatically.	<ul style="list-style-type: none"> .You have left the camcorder to STBY for more than 60s without using it. .The battery pack is fully exhausted.
Battery pack	The battery pack is quickly exhausted.	<ul style="list-style-type: none"> .The atmospheric temperature is too low. .The battery pack is completely dead. Please replace them with new ones.
DV & battery	The DV or battery is hot.	<ul style="list-style-type: none"> . Using the DV continually for a long time.
Photos	The photos are too blur	<ul style="list-style-type: none"> . Exposure is not sufficient.
Deleting	You can't delete the files	<ul style="list-style-type: none"> . The battery lever is low. Please replace them with new ones in time.
SD card	You can't insert an memory card correctly	<ul style="list-style-type: none"> . The direction of inserting card may be incorrect.
Downloading	Movies/ photos can't be downloaded to PC.	<ul style="list-style-type: none"> . The set is wrong. Please refer to how to enter PC mode . There may not install the drive of DV in your PC. Please install drive before downloading.

A00-090315